

NONPARTISAN VOTERS GUIDE

PRIMARY RUNOFF ELECTION » MAY 24, 2022

Lieutenant Governor » Attorney General » Comptroller of Public Accounts »
Commissioner of General Land Office » Railroad Commissioner »
State Board of Education

EARLY VOTING: May 16–20, 2022 »
ELECTION DAY: May 24, 2022. Polls open 7 a.m. to 7 p.m.

» EMPOWERING VOTERS. DEFENDING DEMOCRACY.

» VOTING IN TEXAS PRIMARIES

The upcoming Primary Election is extremely important for Texas!

Primary Election: Texas has *open* primaries, which means *all* Texas voters can participate. The Primary Elections include the Primary Election, which was held on March 1, and this Primary Runoff Election.

- The Republican and Democratic Parties each choose their candidates in a primary election.
- The Libertarian and Green Parties each choose their candidates in a party convention.

Since many districts in Texas heavily favor one party over the other, the primaries often determine the winner of the General Election! Even if you do not strongly identify with any political party, you can and should carefully consider the candidate choices and participate in one of the primaries or conventions.

Note: If you did not vote in the March 1 Primary Election, you can still vote in the Runoff Election! But, if you voted in one party's primary or convention, you cannot vote in another party's runoff primary or convention. So, if you voted in the March 1 Primary Election, on May 24, you can only vote in that same party's Runoff Election.

General Election: Voting in one party's primary election, convention or runoff election does NOT commit you to vote for a particular party or candidate in the General Election. You can still vote for any candidate of your choice, regardless of party, in the General Election.

» VOTERS GUIDE CONTENTS

| | |
|------------------------------------|----|
| League Voters Guide Policy | 2 |
| Be a Texas Voter! | 3 |
| Voter ID—What to Take to the Polls | 4 |
| Helpful Contacts & Websites | 21 |
| Local Leagues in Texas | 21 |
| Sponsors and Major Donors | 22 |

» ABOUT THIS *VOTERS GUIDE*

This *Voters Guide* is funded and published by the League of Women Voters of Texas. The League never supports or opposes political candidates or political parties.

» ONLINE *VOTERS GUIDE*

The online, interactive version of the *Voters Guide* is at [VOTE411.org](https://www.vote411.org). By entering your address, you can view races and candidates that are on your ballot, compare candidates' responses to unbiased questions posed by the League, and create a print-out of your choices to take to the polls. If there is a local League in your community, you can also find information on local races.



» LEAGUE *VOTERS GUIDE* POLICY

- Candidate replies are printed without editing or verification.
- References to opponents or specific persons are not allowed.
- In place of any inappropriate response, the *Voters Guide* will state "Candidate's response did not meet the criteria listed in this *Voters Guide*."
- Videos that do not comply are removed.
- This *Voters Guide* is organized by office, with candidates listed by party, including the names of unopposed candidates. (Ballot order at the polls may vary from county to county.)

- Candidates with no photo in this *Voters Guide* did not submit a photo by the print deadline.
- Candidates who do not respond to our questionnaire by the print deadline are listed with the notation "No response received." Their information may be in [VOTE411.org](https://www.vote411.org).

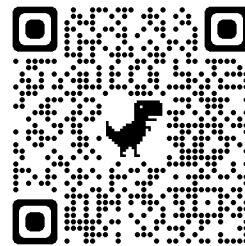
» SIGN UP FOR VOTING REMINDERS!

To get voting reminders on your phone, text LWVTX to 80123.



» SUPPORT THE *VOTERS GUIDE*

Help us fund the cost of this valuable resource for Texas voters by making a secure donation online at [lwvtexas.org](https://www.lwvtexas.org), or by mailing your generous donation to the League of Women Voters of Texas, 1212 Guadalupe #107, Austin, TX 78701.



@ 2022 League of Women Voters of Texas | [lwvtexas.org](https://www.lwvtexas.org)

The *Voters Guide* is protected by copyright. For permission to duplicate the *Guide*, please call the LWV Texas office at 512-472-1100. Any use of the League of Women Voters name in campaign advertising or literature has not been authorized by the League.



» BE A TEXAS VOTER!

The League of Women Voters of Texas fights for the freedom of ALL Texans to vote. Your vote is your voice . . . below are the ways to exercise your right to vote. Whichever way you choose to vote, be sure to first check your voter registration status at [VoteTexas.gov](https://www.vote-texas.gov)! You must be registered before you can vote!

» VOTE BY MAIL

If you applied to vote by mail . . .

- Ballots are mailed out 30 to 45 days before an election or 7 days after the county election office receives an application.
- Be sure to:
 - Mark your ballot using a black or blue pen;
 - Place your ballot in the ballot envelope and seal it;
 - Place the ballot envelope in the carrier envelope;
 - *Under* the envelope flap:
 - Fill in your contact information
 - Provide your ID number from:
 - Texas Drivers License
 - Texas Personal ID
 - Election ID Certificate
 - and/or the last four digits of your Social Security number;
 - Seal the envelope;
 - Sign your name *over* the envelope flap;
 - See [lwvtexas.org](https://www.lwvtexas.org) for more details and helpful information.
- Mail in your ballot as soon as possible. It must be received by 7:00 p.m. on Election Day.
- Track your ballot online at [VoteTexas.gov](https://www.vote-texas.gov)!

If you want to hand deliver your vote by mail ballot . . .

- You may hand deliver *your* marked ballot in person to the county election office on Election Day while polls are open.
- You must show *your* photo ID when delivering the ballot, and sign a form.

» VOTE EARLY IN PERSON

- You may vote early at any voting location in your county.
- Find polling places at [VOTE411.org](https://www.vote411.org) or on your county election website.

- If you have a disability, you may request to move ahead of other voters in line.
- If in line before the poll closing time, you must be allowed to cast a ballot.

» VOTE ON ELECTION DAY

- In some counties, you can vote at any polling place. In other counties, you must vote at your precinct.
- Find polling places at [VOTE411.org](https://www.vote411.org) or on your county election website.
- If in line before the poll closing time, you must be allowed to cast a ballot.

» VOTE IN PERSON USING CURBSIDE VOTING

- If you are physically unable to enter the polling place without personal assistance or likelihood of injuring your health, you may ask that an election officer bring a ballot to your car.
- After you mark your ballot, give it to the election officer or hand it to a companion to deposit in the ballot box for you.
- It is best to call ahead so election officials will expect you!

» VOTE EVEN IF YOU ARE A SUSPENDED VOTER

You can still vote if your voter registration is in suspense! “Suspense” means that your county voter registrar needs to confirm your voting address.

» VOTE A LIMITED BALLOT IF YOU HAVE MOVED BUT NOT RE-REGISTERED

If you have moved to a new county and have not re-registered in the new county by the registration deadline, you may be eligible to vote a limited ballot in your new county. A limited ballot is one that allows you to vote on candidates and measures that are on the ballot for both your former county and your new county, such as statewide and national races. Voting a limited ballot is only available during early voting at the main early voting polling place.

» VOTER ID: WHAT TO TAKE TO THE POLLS

You may use one of seven forms of photo ID, listed below.

- Texas Driver License
- Texas Election Identification Certificate
- Texas Personal Identification Card issued by the Department of Public Safety (DPS)
- Texas Handgun License issued by DPS
- US Military Identification card containing the person's photograph
- US Citizenship Certificate containing the person's photograph
- US Passport (book or card)

Note:

- IDs may have expired up to four years.
- Persons 70 years or older may use an expired ID, regardless of expiration date.
- ID address does not have to match the voter registration address.
- The name on the photo ID should match the voter registration card or be "substantially similar." If the names don't match exactly but are substantially similar, the voter will initial a box for a similar name when signing in to vote.

Registered voters without photo ID, who cannot reasonably obtain one, may sign a form (described below) and present the original or a copy of one of the following documents with the voters name and address to vote a regular ballot:

- Texas voter registration card
- Certified birth certificate

- Current utility bill
- Bank statement
- Government check
- Paycheck
- Any other government document such as an out of state driver's license or expired Texas driver's license.

The form to be filled out by registered voters without a photo ID is a "Voter's Declaration of Reasonable Impediment or Difficulty." The voter must mark on the form one of the following reasons for not providing a photo ID:

- Lack of transportation
- Disability or illness
- Lack of birth certificate or other documents needed to obtain an acceptable form of photo ID
- Work schedule
- Family responsibilities
- Lost or stolen identification
- Acceptable form of photo ID applied for but not received.

Voter Harassment

- Election officials cannot question a voter about the use of an ID type.
- Poll watchers may never question a voter about Voter ID issues.
- If you are harassed, call the Election Protection Voter Hotline!

LIEUTENANT GOVERNOR

Four-year term. The lieutenant governor is powerful because of their position as president of the Texas Senate, where they appoint the chairs and vice-chairs of committees; appoint senators to committees; assign bills to committees; and control the Senate's agenda. The lieutenant governor is also a member of several commissions and boards, and serves as governor in the governor's absence. The salary is that of a State Senator when serving as President of the Texas Senate and that of the Governor when serving in that capacity.

» QUESTIONS TO CANDIDATES

Qualifications: What training, experience and characteristics qualify you for this position?

Power Grid: What further changes, if any, are needed to ensure that Texas has sufficient power in times of extreme weather conditions?

Autonomy of State and Local Government: Under what circumstances should the federal government limit the authority of elected state officials? Under what circumstances should the state government limit the authority of elected local officials?

Health Care: What is your position on reproductive rights and how would you address the economic and health consequences for those who seek and cannot obtain abortions in Texas?

Public Safety: What are some solutions to enhance public safety in Texas? How do we balance these solutions with protecting civil rights?



» Michelle Beckley (D)

Qualifications: I was elected to the Texas Legislature in 2018 and became the first Democrat to ever represent

District 65 in Denton County. I said I would fight for healthcare, education, & the environment and did. This led to an improved margin win in 2020.

Power Grid: The 87th legislature did not do enough. Texas needs to reverse the course of deregulation and consider the option of connecting back to the national grid. El Paso & Texarkana did not lose power like the rest of the state, both are connected to the national grid.

Autonomy of State and Local Government: Texas has been controlled by the GOP for over 25 years. State officials are running amuck due to checks & balances that no longer exist. The federal government needs to address the Voting Rights

Bills. We saw our freedom to vote diluted as well as extreme gerrymandering in 2021. The state government should not interfere with local health regulations.

Health Care: The attacks on women's healthcare should not continue. I voted against HB8. There should not be \$10,000 bounties on women & health professionals. A woman's choice on abortion is between her and her doctor.

Public Safety: I had a city come to me with the issue of a police officer that had been fired with cause now working at a neighboring city. Municipalities should be able to know this information upon hiring or the problems can't be addressed and will continue. Texas needs to look into solutions to address these issues and solve them.

Campaign Website: <http://www.michellebeckley.com>



» Mike Collier (D)

Qualifications: Mike spent his career as a CPA and an auditor at PriceWaterhouseCoopers before becoming a CFO of a Texas energy company, helping create good-paying jobs. His experience as an accountant gives him a deep understanding of how our state's budget works.

Power Grid: For years, our state leaders were warned about the grid's vulnerability and did nothing. As a result, Texans froze, Texans died, and corporations got rich. We must winterize our gas supply, invest in smart grid technology, and increase power storage. We must also ensure that Texas families do not pay more when companies pay less for an unreliable grid.

Autonomy of State and Local Government: If the behavior of any official is inconsistent with our constitutional rights, then it is the responsibility of the federal government, partic-

ularly the courts, to step in. That said, local control is key to accountability, and it's at the heart of a healthy democracy. So, as Lt. Governor, I will work closely with duly elected local partners—not against them.

Health Care: Mike will defend our constitutional rights so that women will be masters of their own health and their own destinies. The Principles laid down by *Roe v Wade* and have guided us for nearly the last fifty years are reasonable and are supported by the vast majority of Americans.

Public Safety: Mike will work to reverse laws that allow criminals to access firearms and put our communities and law enforcement officers at risk. Further, we all want law enforcement that we know, trust, and are accountable to our local communities. We must also invest more in mental health training and restorative justice to create safer, more prosperous communities across Texas.

Campaign Website: <http://CollierforTexas.com>

ATTORNEY GENERAL

Four-year term. The attorney general is the chief law enforcement officer of the state; represents the state and state officials in legal matters; issues opinions; oversees collection of child support; administers the crime victims compensation fund; enforces the open records/open meetings acts; approves public bond issues; and enforces consumer regulations. Current salary: \$153,750

» QUESTIONS TO CANDIDATES

Qualifications: What training, experience and characteristics qualify you for this position?

Elections: What is the Attorney General’s role in protecting Texans’ freedom to vote while maintaining safe and secure elections?

Health Care: What is your position on reproductive rights and how would you address the economic and health consequences for those who seek and cannot obtain abortions in Texas?

Immigration: What is the role of the state government in enforcing federal immigration laws?

Priorities: As Attorney General, what would be your highest priorities for the next four years, and how do you intend to accomplish them?



» Rochelle Mercedes Garza (D)

Qualifications: I have experience in immigration, family, criminal, and constitutional law. My work

has resulted in the “Garza Notice,” a requirement that teens in immigration detention have a right to access abortion, reinforcing a constitutional right nationwide.

Elections: As AG, I will dismantle the wasteful “election integrity unit” — which is really about enforcing the GOP’s voter suppression measures, instead of protecting voting rights — and replace it with a voter protection unit under a fully funded civil rights department. I will ensure voting rights are protected, not undermined, especially for voters of color.

Health Care: Abortion care is health care, and health care is a human right. Reproductive choice is a moral imperative and an issue of racial, economic, and gender justice. I’m committed to restoring abortion access in TX and defending the rights

of women and pregnant people anywhere they’re threatened. I’ve defended reproductive rights before and will do so as TX AG.

Immigration: Immigration enforcement falls under federal jurisdiction. As an immigration attorney & border native, I understand the complexities of our immigration system. I have litigated against bad policies, like Remain in Mexico, that have created a humanitarian crisis at the border. Texas’ enforcement efforts at the border are unconstitutional, wasteful and only worsen the issue.

Priorities: As AG, I will fight for our Texas families. This means protecting constitutional rights, including voting & abortion rights; consumer protection, so our energy grid doesn’t fail; and prioritizing public health, so municipalities & schools can protect people in the middle of a pandemic and our rural communities have the infrastructure they need, like clean drinking water.

Campaign Website: <http://RochelleGarzaforTexas.com>



» Joe Jaworski (D)

Qualifications: Licensed TX attorney; 30 years' experience in trial/appellate litigation in TX state and federal courts. TX mediator; 8 years

local govt. experience: councilmember, mayor pro tem and mayor of Galveston, TX. Mentored by my grandfather Leon Jaworski.

Elections: I will form a voter access unit from the ashes of the AG's fake voter fraud division because TX voters should turn to the AG's office when their voting rights are suppressed. District and County attorneys may initiate fraud prosecution to keep our elections safe, but access is the key. I will ensure principals are registering high school seniors. Elec. Code 13.046(d)

Health Care: I support the Rule of Law set forth in Roe v. Wade and Planned Parenthood vs. Casey. Abortion should remain legal and available before fetal viability outside the mother's womb. Government should get out of the way of family planning education

and broad reproductive healthcare access. As Texas AG, I would advocate for these positions in court.

Immigration: State government should partner with the federal government to enforce federal immigration laws. For example, as Texas AG I would dedicate part of my \$1.1 Billion budget to hire eight SAUSAs (Special Asst. U.S. Attorneys) to work under the direction of the United States Attorneys for the Southern and Western Districts of Texas to prosecute cartel immigration crimes.

Priorities: On day one of my administration, I will dismiss any lingering lawsuits brought by the Texas AG against the ACA before lunch. I will testify in the 2023 Legislature for cannabis legalization (for jobs, to help our veterans, and to give our police a break so they can fight real crime). I will ensure principals register every 18 year old pursuant to Tex. Elec. Code 13.046(d).

Campaign Website: <http://www.JaworskiForTexas.com>



» George P. Bush (R)

Qualifications: *Candidate's response did not meet the criteria as listed in this Voters Guide.*

Elections: The AG must ensure that our elections system is fair, just, and secure. As Attorney General, I will rebuild trust with our District Attorneys, lead the charge in prosecuting cases on election fraud and expand our state's election integrity unit.

Health Care: To me, nothing is more important than protecting life in Texas. As a lifelong catholic, where I stand on the issue is very clear. Life is not negotiable. Our children deserve an Attorney General who isn't going to just file lawsuits in the name of life, but one who can file suits and find innovative ways to win on behalf of the right to life.

Immigration: Our Attorney General is the first line of defense against the federal government. As Attorney General, I will: 1) Work with the Governor to deploy more National Guard troops to the Texas/Mexico border; 2) Toughen criminal penalties on drug smugglers and human traffickers; 3) Finish President Trump's wall and continue building the Texas wall.

Priorities: My top priorities will be restoring integrity back to the Office of Attorney General, protecting our borders and elections, standing up to the federal government to protect Texans' constitutional liberties, and defending and standing with law enforcement. Texans can rest assured that I won't just file suit against the Federal Government, but I'll also win the cases filed.

Campaign Website: <http://georgepbush.com>

» Ken Paxton (R) No Response Received

COMPTROLLER OF PUBLIC ACCOUNTS

Four-year term. The comptroller is the chief financial officer of the state; collects state taxes and fees; pays the state's bills; provides revenue estimates to the legislature; certifies the budget; reports the condition of the state's finances; and provides economic development assistance to local governments and private businesses. Current salary: \$153,750

» QUESTIONS TO CANDIDATES

Qualifications: What training, experience and characteristics qualify you for this position?

Rainy Day Fund: What is the optimal amount to be held in the Rainy Day Fund and what is the criteria for usage? What is your opinion on using the fund to pay down the state's debt vs. using it to help citizens that have been harmed by catastrophes?

Taxes: In your opinion, what is the proper balance of tax revenues sources to fairly fund state government, including public schools?

Financial Obligations: What needs to be done, if anything, to ensure that Texas can meet its long-term financial obligations such as infrastructure maintenance, state employee pensions and health care coverage for public school teachers and employees?

Priorities: As Comptroller, what would be your highest priorities for the next four years, and how do you intend to accomplish them?



» Janet T. Dudding (D)

Qualifications: I'm a certified public accountant (CPA) who's spent my adult life in governmental accounting, auditing, administration and even investigations.

Rainy Day Fund: Government Finance Officers Association recommends a minimum of 2 months of regular revenue or regular expenditures be maintained in a rainy day fund. Typically, rainy day monies mitigate the risk of unstable revenues or unexpected expenditures. Natural disasters fall into the second category. The state of Texas' general obligation debt currently is rated Aaa/AAA/AAA/AAA.

Taxes: The Texas Legislature added \$6.5 billion dollars in funding to public schools in 2019. Yet per a 2021 SPLC report, Texas currently ranks 40th in the nation. New revenue streams are needed. Legalizing adult-use cannabis could bring \$1 billion in tax revenue (and decriminalization could save \$300

million). Look at "green" taxes to build revenue streams from green energy.

Financial Obligations: Regarding infrastructure, Texas should accept the \$35 billion of federal Infrastructure and Jobs Act dollars. With fuel efficient vehicles, it would be interested to look at creating a revenue stream from alternative fuels to maintain roads. Public school employees in all but ~12 school districts do not participate in social security and they should. Find the money.

Priorities: Comptroller has the bully pulpit on how our money is spent. Expanding mental health & healthcare to 1.4 million adult Texans saves \$100 million in state tax and our property taxes. Work with local governments re broadband as a local utility, keeping the costs down and creating an income stream. Work with state agencies, reduce methane emissions on state property.

Campaign Website: <http://janetdudding4texas.com>

COMPTROLLER OF PUBLIC ACCOUNTS

(continued)



» Angel Luis Vega (D)

Qualifications: I am a purpose-driven professional offering over 20 years in business strategy, finance, operations, managing multimillion-dollar budgets, and large groups of people. Bachelor of Business Administration & Master in Management & Leadership.

Rainy Day Fund: We should increase the fund to 25 billion & allocate 1.75 to 2 billion annually. The primary purpose of these funds should be for natural disasters and recession to support our communities, support people keeping their homes, adequately fund our schools, support any healthcare crisis, provide food assistance and guarantee public safety.

Taxes: Suppose we focus on boosting Texans entrepreneurship, attracting new business opportunities, eliminating the corporate tax loopholes, and reducing the unemployment rate to under 3%. In that case, the proper balance of tax revenue could

be at 145 billion. For the spending budget, 140 billion annually, including public school funding and health care.

Financial Obligations: We need to have a transparent tax administration. Be effective in forecasting, identifying the fundamental long-term obligations, putting our community first without eliminating essential funds for our public school teachers, employees, retirees, and community programs. Invest strategically, attract more business ventures to the state and legalize recreational marijuana.

Priorities: I would focus on transparency, accountability, efficiency, optimizing the office's capabilities, boosting entrepreneurship, attracting new business opportunities, thriving jobs, and reducing unemployment under 3%. Guarantee retirement security & protect pensions. I will make decisions in the interest of all the people of Texas, not the special interest groups.

Campaign Website: <http://www.angelvega.com>

COMMISSIONER OF GENERAL LAND OFFICE

Four-year term. As head of the General Land Office, the commissioner manages state lands, including oil and gas properties (which supply funds to the Permanent School Fund) and the Alamo. The commissioner chairs the Veterans Land Board, which administers programs for Texas veterans, and is responsible for environmental protection of Texas' coast. Other state boards chaired include the School Land Board and the Coastal Coordination Advisory Committee. Current salary \$140,938

» QUESTIONS TO CANDIDATES

Qualifications: What training, experience and characteristics qualify you for this position?

Allocation of Federal Funds: When federal funds for natural disaster relief and mitigation are allocated, how would you ensure that communities with the highest needs are prioritized?

The Alamo: As the head of the agency that manages the Alamo, what story do you believe it should tell?

Coastal Planning: What measures would you implement to restore and protect the coast, wetlands, and the built environment to minimize damage from major storms?

Priorities: As Land Commissioner, what would be your highest priorities for the next four years, and how do you intend to accomplish them?



» Jay Kleberg (D)

Qualifications: I grew up working on the King Ranch and have spent my whole career in conservation. I served as the Associate Director of the Texas Parks and Wildlife Foundation, and now I own a land-based conservation business and work in environmental education.

Allocation of Federal Funds: I would use the GLO's discretion to administer federal funds to ensure that dense, urban areas are not penalized and that damage claims for lower income homeowners and renters are not ignored. I would also send teams into damaged communities to ensure the timely disbursement of FEMA funds and application for longer-term allocation of funds.

The Alamo: The Alamo is a symbol of Texan and Tejano pride and we should honor their contributions to the state. We should also consider the role of early Black Texans and slavery in Texas' history, as well as indigenous groups who inhabited the

site for centuries. As for the battle, the GLO should tell the comprehensive story and honor the facts of those historic events.

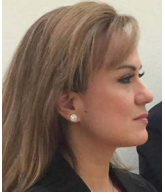
Coastal Planning: The GLO will incorporate climate change modeling into the Coastal Management Plan, which will increase the standard for all federal and state investment on the coast. These higher standards would be applied to the Coastal Resiliency Master Plan and the \$30 billion Coastal Spine. These standards would also maximize investments with GOMESA, NRDA, CEPRA and HUD-CDBG funds.

Priorities: My top priorities for the next four years are to adequately fund our Texas schools through the General Land Office's contribution to the Permanent School Fund, address the effects of climate change and diversify our state's energy portfolio to strengthen our grid, and to prepare for future natural disasters by fortifying our coast and other vulnerable areas of our state.

Campaign Website: <http://jay4tx.com>

COMMISSIONER OF GENERAL LAND OFFICE

(continued)



» Sandragrace Martinez (D)

Qualifications: My expertise in trauma informed care, crisis management, my in-depth understanding of the legislative process, and the desire for educating my community, is a passion that has equipped me with the necessary skills to perform these duties.

Allocation of Federal Funds: Establish meaningful partnerships with all local governments and develop comprehensive insights on potential strains in our communities, is how we can pro-actively begin to manage and prioritize effectively. Mitigating and allocating relief from a natural disaster will depend on the areas hit, the socioeconomics in that region, and their resources.

The Alamo: When I visit other cities or a different country, and I tour their historical structures and monuments, my initial questions are always, ‘how did it get here, who built it, and why?’ In essence, the story of the Alamo can only begin at that

point due to chronological logic, so by default the story will have to involve explanations on how that evolved.

Coastal Planning: Our Texas Ports alone, have an impact of nearly 1.8 million jobs and generate somewhere around \$102 billion in personal income, so the protection of our coastline is imperative for supporting the financial well-being of citizens, and projects along the Coastline must provide the required maintenance, development, and improvements to sustain those areas.

Priorities: Disaster readiness and prevention with fine tuning the logistics involved are paramount. Honoring our Veterans with the same level of devotion and allegiance that they made to this country, and applying that same devotion to their benefits and healthcare. I want to create more programs and initiatives to help provide funding for public education.

Campaign Website: <http://www.sandragrace4texans.com/>

» Dawn Buckingham (R)

Qualifications: Landowner experienced in land management & physician used to making major decisions. Senator & Sunset Commission member where I reviewed state agencies, fixed inefficiencies, cut waste, & improved outcomes for taxpayers. Ready to lead the GLO on day 1

Allocation of Federal Funds: I would immediately identify what communities were hit the hardest by a storm and also identify which communities have the most daunting path to recovery. We must ensure that these federal funds are going to communities that are directly impacted or are prone to be affected by the next storm on the horizon. Us-

ing the benefit of hindsight, we can plan before it’s too late.

The Alamo: There will be no reimagining the Alamo under my watch. As a State Senator, I initiated the legal challenge that kept the Alamo Cenotaph in its rightful place, out in front, and passed the only piece of legislation protecting our historical monuments. The GLO is the tip of the spear in defending our rich Texas history we know and love, and I will always fight to protect it.

Coastal Planning: By protecting our wetlands and coast with land management practices such as proper sand dune rebuilding, we will be able to naturally minimize damage in our coastal communities. We must also work with the Federal Gov-

COMMISSIONER OF GENERAL LAND OFFICE

(continued)

» Dawn Buckingham (R) (continued)

ernment to ensure we build the Coastal Spine Barrier Project, known as the Ike Dike, to protect our Texans along the coast, oil & gas industry, and refineries.

Priorities: I'll secure our border by identifying available state lands on the border and begin building a border wall as soon as possible. I'll also con-

tinue to fight to preserve the Alamo as we know it for generations to come and keep our commitment to our Veterans and children by providing them with quality care and education through the Veterans Land Board & Permanent School Fund.

Campaign Website: <http://www.dawnbuckingham.com>



» Tim Westley (R)

Qualifications: I am a former two-time nominee for U.S. Congressional District 15, PhD. in Educational

Leadership, U.S. Army Veteran, & Non-profit Community Leader. I have researched, provided solutions, & worked on or with all the major areas the position covers.

Allocation of Federal Funds: I would have liaisons ready to work with mayors before disasters strike to map areas that fit into U.S. Depart. of Housing & Urban Development's (HUD) basic requirements for fund disbursements. Next, I would recommend placing them on a mapping database so that as disasters happen, they are quickly identified by area. Finally, ensure funding procedures are known by all.

The Alamo: The Truth. As Historian of the Republican Party of Texas, the story of the Alamo has already been written and told. It does not require a rewrite or revision. Such history I have shared in

the city of San Antonio and beyond. This historical story is one I've told publicly at the foot of the Cenotaph in the Alamo footprint on many occasions and will continue to tell.

Coastal Planning: I would be proactive by view current studies for protection and seeing what we can readily implement. I would also encourage investment in hurricane surge protection projects. Ultimately, I would ensure consistent talks with experts in the field such as engineers, geoscientist, and other partners to develop and implement mitigation plans at the earliest stage.

Priorities: Identify all public lands on our 1254 mile southern border and Partner with other organizations to secure it. Help advance oil, gas, & mining exploration through increased land lease opportunities so that Texas leads the way to energy independence while providing jobs for Texans. Ensure the \$43 billion Permanent School Fund is used properly to raise level of education.

Campaign Website: <http://www.texans4tim.com>

RAILROAD COMMISSIONER

Six-year term. The Railroad Commissioner is one of the three-member Texas Railroad Commission. The commission regulates the oil and gas industry, gas utilities, pipeline safety, safety in the liquified petroleum gas industry and surface coal and uranium mining. It has no regulatory authority concerning railroads. Current salary: \$140,937

» QUESTIONS TO CANDIDATES

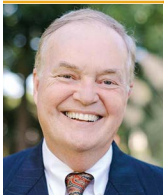
Qualifications: What training, experience and background qualify you for this position?

Ethics: Since candidates for Railroad Commission often raise money from the oil and gas industry, how can citizens be assured that campaign donations will not influence how commissioners regulate that industry?

Emissions: How important is the impact of methane emissions on climate change? What are effective ways to reduce methane emissions in the oil and gas industry?

Natural Gas Facility Weatherization: What further changes, if any, are needed to ensure that Texas has sufficient power in times of extreme weather conditions?

Seismic Activity: What are the most important measures the Railroad Commission can implement to reduce the risk of seismic activity or earthquakes caused by water disposal from oil and gas drilling?



» Wayne Christian (R)

Qualifications: *Candidate's response did not meet the criteria as listed in this Voters Guide.*

Ethics: Campaigns cost money to run, so all candidates for all offices must raise money. The standards for RRC are no different than any other office. My job is to represent the people of Texas and ensure they have access to cheap, plentiful, reliable energy. Contributions have not and will not impact my dedication to doing what is right for the people of Texas.

Emissions: A clean environment & a thriving oil & gas industry are not mutually exclusive. Since 1970, the six major pollutants regulated by the EPA have decreased 77% while our economy has grown 285%, population has grown 60%, & energy consumption has grown 48%. We've reduced flaring/methane from 2.38% in Jan. 2019 to 0.21% in Sept. 2021 under my leadership w/out overregulation.

Natural Gas Facility Weatherization: The RRC recently designated natural gas facilities as critical during energy emergencies and put in place weatherization requirements to ensure our oil and gas assets are prepared for emergencies. We must also ensure we are prioritizing energy generation from reliable sources through eliminating subsidies and preferential treatment for less reliable forms of energy.

Seismic Activity: The Railroad Commission takes seismic activity very seriously and has a seismologist on staff to advise the agency to ensure our regulatory actions are based on sound-science. In response to recent earthquakes in West Texas, the RRC ordered the indefinite suspension of all deep oil and gas produced water injection in the Gardenale Seismic Response Area.

Campaign Website: <http://ChristianForTexas.com>



» Sarah Stogner (R)

Qualifications: I am an attorney who has dedicated the past 13 years of my life to helping various stakeholders in the oil and gas industry with no desire to be a politician. I will end the crony capitalism preventing meaningful change to tackle the real problems.

Ethics: I'm not accepting donations because our current regulators are bought by the industry they are charged with regulating. Plain and simple - the current regulators have enriched themselves and their friends at the expense of Texans. We're having earthquakes and losing our freshwater aquifers. Texas must handle or the federal government will intervene. End crony capitalism!

Emissions: We should not be venting or flaring methane. It's a vital energy source that should be put to beneficial purposes. We should incentivize leak prevention. We should incentivize alternative uses (such as cryptocurrency mining). And we have

to hold bad actors accountable. Climate change will be the least of our concerns if we don't fix our groundwater and seismic issues.

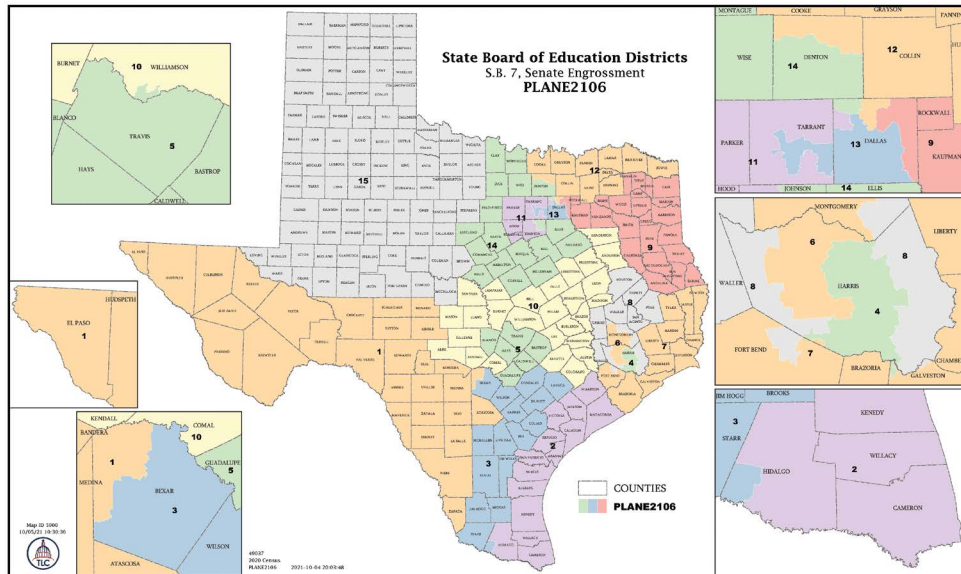
Natural Gas Facility Weatherization: Natural gas facilities are vital to maintaining the integrity of the Texas grid. We need to consult with experts on how to properly winterize facilities and ensure we do not have a repeat winter where Texans die. But we cannot foist this expense on the taxpayers either. Operators should not be able to opt out of vital winterization of natural gas facilities.

Seismic Activity: Seismic activity is a real issue. We need to look at the big picture of what is happening geologically. We are extracting & injecting into different zones millions of barrels of water per day in the Permian Basin alone. We should not be using fresh water for drilling or completing wells. We need to incentivize innovation to tackle this complicated issue.

Campaign Website: <http://www.sarah4RRC.com>

STATE BOARD OF EDUCATION

Four-year term. The fifteen-member board decides curriculum, standards, student testing, special education programs, and textbooks for Texas public schools. It also oversees the Permanent School Fund. Members of the board are not paid, but receive reimbursement for expenses incurred in the course of official business.



» QUESTIONS TO CANDIDATES

Qualifications: What training, experience and background qualify you for this position?

Charter Schools: What is the impact of new independent charter school networks on the funding for local public schools? And is there anything you would do to change that impact?

Inclusive Education: As the developer of Texas public school curriculum, how would you ensure a comprehensive history education that addresses the needs of all students?

Recovery: What can the State Board of Education do to assist local school districts to develop programs so that students who fell behind from the pandemic can recover?

Other Issues: What other issues do you believe will be the most pressing for the State Board of Education?

» DISTRICT 1



» Laura Marquez (D)

Qualifications: I have an MSW and previous experience (7 years) working in public education as a para-educator providing special education and re-

lated services to students with disabilities. I currently work in prevention and intervention in early childhood.

Charter Schools: Different funding mechanism and accountability standards for charter schools and districts have effectively created two separate

» **Laura Marquez (D)** *(continued)*

and unequal education systems. To change this, I would deny approvals for any charter applications that have a history of being bad financial practices, and work with legislative colleagues to ensure greater accountability and transparency.

Inclusive Education: I would immediately work with legislative colleagues to repeal harmful anti-CRT legislation while ensuring current policies are not applied more broadly than allowed. I would also partner with education stakeholders to navigate within the scope of current public policy to find alternative mechanisms for supporting inclusive education.

Recovery: In this respect, I would use my background in grassroots networking and commu-

nity non-profit work to partner with school districts to find ways to develop or utilize existing programs that address student needs in a holistic manner. Especially as students continue to navigate through the trauma and uncertainty of an ongoing pandemic.

Other Issues: We are at a moment in time where education is being positioned at the forefront of partisan politics. Sadly, this has placed every issue faced by the SBOE on tenuous ground. Now, more than ever we must remain balanced and responsible to support schools, students, educators, and the collective interest of the community to ensure an equitable and just education system.

Campaign Website: <http://www.laurafortxeducation.com>



» **Melissa N. Ortega (D)**

Qualifications: I am a credentialed Texas educator. I have taught math and science in the middle

school, STEM education courses in the university setting. Served as an administrator at the district level, written and facilitated curriculum, served as a mentor to //

Charter Schools: As a State Board of Education Member, I would always vote in my constituents favor and work to review all charter applications that go through capacity interviews. I would make it a practice to attend capacity interviews and provide applicants with allotted time to share with me information about their application. I would always request detailed summaries of each charter //

Inclusive Education: A comprehensive history education program should be incorporate diverse perspectives and acknowledge that historical events are affected by race, ethnicity, culture, religion, education, gender, gender identity, sexual orientation,

disability, and personal experiences. An effective history builds on students' capacity for research, reasoning, generating logical arguments, //

Recovery: Texas needs to take a structured, thoughtful approach to addressing learning loss as a result of the pandemic to help students catch up. We should begin by identifying which learning standards and content students need to know for future learner. For example, in order for a student to be successful in Algebra II, they would need to have mastered Algebra I first. A different //

Other Issues: I'm running for State Board of Education for District 1 because I care deeply about public education. Texas needs someone with a deep understanding of education from the perspective of an educator, district administrator, community leader, researcher, and parent. Texas also needs someone who is highly motivated, ethical, compassionate, and able to make the crucial decisions //

Campaign Website: www.drmelissaortega4txvsboel.com/

» DISTRICT 2

» Pete Garcia (D)

No Response Received

» Victor Perez (D)

No Response Received

» DISTRICT 4



» Staci Childs (D)

Qualifications: I run for this position having experience as a 4th and 5th grade English, Social Studies, and ESL educator, a Theatre Arts educator, Interventionist, Summer School Principal, Founder and CEO of an educational non-profit, and now a defense attorney.

Charter Schools: What I believe to be true is that charter school networks should work in tandem with public schools to ensure that all children are receiving high quality education. I would work to make sure public schools get adequate funding to address the needs of their students by making sure the public schools in my district have would they need to be equally successful.

Inclusive Education: This is extremely important to me. I think to ensure history education is implemented properly, a panel of current educators and practitioners must be created that will help develop this curriculum so that our students are ex-

periencing inclusive education. The panel should be comprised of persons from every creed, race, gender, and lived experience.

Recovery: The State Board of Education can create a task-force comprised of businesses with high level technology and highly educated staff to work together with educators to double-down on the instruction and resources needed to fill the gaps. Companies such as Apple, Microsoft, and HP, have the resources and man power to provide support to our students recoup the learning lost.

Other Issues: The top priority of the State Board of Education right now is making sure our school districts, students, and parents feel empowered and equipped with what's necessary to make up for losses due to the pandemic. Aside from that, we must make our curriculum inclusive and relevant such that our students ready for the new world they will enter once they graduate.

Campaign Website: <http://stacifortexas.com>



» Coretta Mallet-Fontenot (D)

Qualifications: I have served Houston ISD for 23 years. My Bachelor's and Master's Degrees are in education. Currently, I am pursuing my doctorate in education. I have served as the District Advisory Committee Co-chair and am a former Campus Teacher of the Year.

Charter Schools: The Basic Allotment for each student enrolled in a public school is \$6,160. I would limit new charter applications. Charter schools received an additional \$1,058 per student. This means students in need of additional support may not have access to it. For example, may mean the difference between hiring a full-time speech therapist or contracting limited services.

Inclusive Education: America and Texas have rich and complicated histories. The Texas history

curriculum should reflect that history. The TEKS should be objectively written and research-based by history teachers, so students learn the facts of our history.

Recovery: TEA should expand academic support along with social and emotional resources to help students recover academically and mentally during the pandemic. For example, hiring teaching assistants for core content areas, providing school day tutorials for students who are not able to attend tutorials outside of the school hours.

Other Issues: Issues that are of great importance for a strong public education system in Texas are: 1) fully funded public education 2) pay raises for school employees 3) fully funded pre-kindergarten and 4) offering multiple paths to graduation.

Campaign Website: <http://corettaforsboe4.com>

» DISTRICT 13



» Kathryn Monette (R)

Qualifications: I have been teaching 4th grade girls at my church for several years. I also tutor elementary math at a local Charter school.

Charter Schools: Charter schools are public schools that get limited funding. They are required to secure their own facilities. Overall, the costs to the state to run a charter school are less than the public school and creates opportunities for families to pick the school they believe to best fit their needs.

Inclusive Education: History is history. It doesn't need to be changed to fit any group of people. What happened is what happened. It's to learn from and to analyze the how, who, what, why, and where to keep from making the same mistakes. We

are not responsible for our ancestors, but we are responsible for our own actions in the present and how we shape our future.

Recovery: Possibly small classrooms of students of each grade so that the teacher can cover more material and to cover them more quickly to get them caught up.

Other Issues: To take the indoctrination out of education and leave that to the family unit. There is far too much of social learning and emotional learning and not enough on simply teaching the core subjects. More needs to be taught about our government such as the Declaration of Independence and the Bill of Rights. Stop comprehensive sex education.

Campaign Website: KathrynMonette.org



» A. Denise Russell (R)

Qualifications: I have been in the education field for over 20 years. I have served on local school district committees that have recommended text-

book adoptions and established curriculum guidelines.

Charter Schools: The local public schools are receiving 100% of the funds allocated towards the students enrolled in their schools.

Inclusive Education: I would review the current history curriculum versus the actual account of the

incident to ensure that what is being taught presently is what actually occurred in history.

Recovery: The State Board of Education can work with the Texas Education Administration to develop a common program for all local schools to use on students that have fallen behind due to the pandemic.

Other Issues: Creating more life-applicable courses in order to graduate Texas students who are better socially and financially prepared for success after high school.

Campaign Website: <http://adeniserussell.net>

CHIEF JUSTICE AND JUSTICE, COURT OF APPEALS

Six-year term. Courts of Appeals hear appeals on civil and criminal cases from lower courts in their districts. Current salary for Chief Justice: \$187,800. Current salary for Justice: \$184,800.

» See VOTE411.org to compare Court of Appeal candidates in your district.



» HELPFUL CONTACTS AND WEBSITES

League of Women Voters of Texas
lwvtexas.org

Secretary of State
VoteTexas.gov

Your County Election Website
lwvtexas.org/find-your-county-election-website

Election Protection
866OURVOTE.org

Voter Hotlines!

- English: 866-OUR-VOTE or 866-687-8683
- Spanish: 888-Ve-Y-Vota or 888-839-8682
- Asian: 888-API-VOTE or 888-274-8683
- Disability Rights TX: 888-796-VOTE or 888-796-8683

Republican Party
texasgop.org

Democratic Party
txdemocrats.org

Libertarian Party
lptexas.org

Green Party
txgreens.org



EMPOWERING VOTERS. DEFENDING DEMOCRACY.

The LWV is a nonpartisan political organization and is one of America’s most trusted grassroots organizations! We aim to:

- Achieve a free and fair democracy
- Increase participation in government
- Expand voter participation in Texas
- Create a League that is diverse, equitable, and inclusive.



League of Women Voters of Texas Voter Education Chair: Dorothy Marchand

Production Team: Community Impact, Inspire Rare Communications, Jaci Collins, Motto Publishing Services, Trúc Việt Organization



» TEXAS LOCAL LEAGUES

Learn more about our local Texas Leagues and how they help shape today’s important issues by visiting lwvtexas.org.

| | | | | |
|---------------|------------------|-------------------|---------------------|-------------------|
| Amarillo | Cooke County | Hays County | Richardson | Waco Area |
| Austin Area | Corpus Christi | Hill Country | Rio Grande Valley | Wichita Falls |
| Bay Area | Cy-Fair | Houston | San Antonio Area | Williamson County |
| Baytown | Dallas | Irving | South Central Texas | Wilson County |
| Brazos Valley | Denton | Lubbock County | Tarrant County | |
| Collin County | El Paso | Midland | Tyler/Smith County | |
| Comal Area | Fort Bend County | Montgomery County | Victoria | |



» VOTERS GUIDE SPONSORS AND SUPPORTERS

LWV Texas *Voters Guides* are funded by the League of Women Voters of Texas, a 501(c)(3) corporation that is supported by contributions from individuals, corporations, and foundations. We would like to acknowledge the following generous *Voters Guide* sponsors and major donors, as well as the donations from all of our supporters which make the publication of this *Voters Guide* possible.

Platinum *Voters Guide* Sponsors

Carillon Senior Living
 League of Women Voters Education Fund
 Methodist Healthcare Ministries of South Texas
 Texas Association of Counties
 Women in Technology at Samsung (“WITS”)

Gold *Voters Guide* Sponsors

Ruthann Geer
 Dorothy Marchand and John Bassett
 John Nolan
 Diane Sheridan, Facilitator
 TeachtheVote.org, a Project of the Association of Texas Professional Educators (ATPE)
 Unitarian Universalists of New Braunfels
 Elaine Wiant

Major 2022 Contributors

| | |
|---------------------------|--|
| Anonymous | the Dallas Jewish Community Foundation |
| Arnold Foundation | Julie and Michael Lowenberg |
| Diana Bacon | Elisabeth MacNamara |
| Melanie Barnes | Mary C Decker Charitable Fund |
| Elizabeth Branch | Marston Meador |
| Charles Burgess | Imogene Mitchell |
| Stefanie Cavanaugh | T. Michael O’Connor |
| Grace Chimene | Mr & Mrs Charles Parrish |
| Laura Churchill | Bernard Patten |
| Virginia Clark | Janis Richardson |
| Paul and Marian Cones | Lance and Erin Ramsey |
| Ruth Davis | Kevin Rowe |
| Verva Densmore | Madeleine Sann |
| Deirdre Doyle | Meg Scott-Johnson |
| Roxanne Elder | Alana Spiwak |
| Vikki Goodwin | Diane Tasian |
| Linda Hanratty | Deb Treece |
| Gayle Halpin | Linda Wassenich |
| Michael Huck | William and Wen Devaney Family Fund |
| Janet Imhoff | Wintemute Family Foundation |
| Kathleen Irvin | Erica Wilson |
| Deborah and John Kochevar | Joseph Zlotkowski |
| Joyce LeBombard | |
| Laurie McNeill Lee | |
| Louis and Carole Shilpak | |
| Philanthropic Fund of | |

